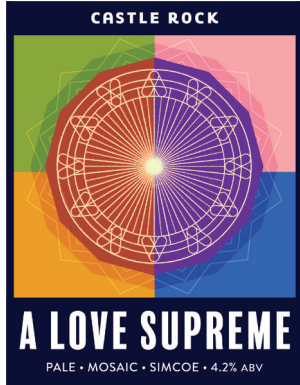


# CASTLE ROCK

@CRBrewery • T. 0115 681 0057 • sales@castlerockbrewery.co.uk  
Queensbridge Road, Nottingham, NG2 1NB

## SEASONALS AND SPECIALS - CASK

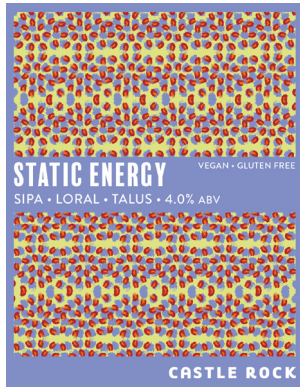


### A LOVE SUPREME

NEW AVAILABLE NOW!

4.2% ABV • DHP • SIMCOE • MOSAIC

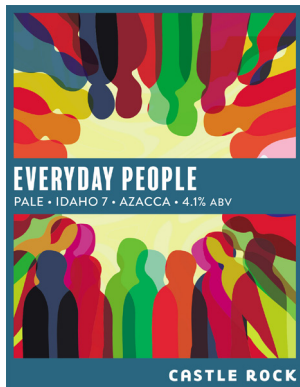
Pouring pale gold and crystal clear in the glass, this simple pale ale (dry hopped with Simcoe and Mosaic) lends aromas of citrus, passionfruit and pine. Flavours of sweet cereal, ripe mango and zesty orange are followed by a refreshingly crisp and bitter finish.



### STATIC ENERGY

4.0% ABV • SIPA • VEGAN • GLUTEN FREE

Loral hops lend this hazy IPA a pleasant fruity, peppery, floral aroma with Talus hops adding citrus, woody and tropical notes. Citrus zest piquancy is balanced by subtle earthy flavours making this a soft and drinkable session pale which is eminently drinkable and buzzing with energy.



### EVERYDAY PEOPLE

4.1% ABV • DHP • IDAHO 7 • AZACCA

Idaho 7 & Azacca hops deliver an initial scent of pineapple, ripe mango and nectarine with floral notes and a warming sweetness with a balanced bitterness.

## OUR HOUSE 3.4% ABV • EXTRA PALE ALE

A lower-alcohol and sessionable quality alternative in our roster, Our House is an easy-drinking extra pale ale with a satisfying crisp finish.

**PRICE HELD UNTIL 2025.**



**HARVEST PALE**  
3.8 % ABV

Refreshing multi-award-winning blonde beer with delicate citrus character.

ALSO IN: Bottle (8x500ml)



**BLACK GOLD**  
3.8 % ABV

Full-bodied mild with a hoppy aroma and well-balanced bittersweet taste.  
GOLD CAMRA Champion Beer East Mids Region



**PRESERVATION**  
4.4 % ABV

Brewed to the traditional East Midlands style, Preservation is a russet-coloured, easy drinking full flavoured best bitter.



**OATMEAL STOUT**  
4.6 % ABV • VEGAN

Rich, rounded and full with aromas of dried fruit and marmalade, followed by deep coffee, caramel and chocolate flavours.



**ELSIE MO**  
4.7 % ABV

Single malt golden ale brewed with Low Colour Maris Otter malt. Delicate citrus and floral notes.

ALSO IN: Bottle (8x500ml)



**SCREECH OWL**  
5.5 % ABV

Balanced IPA with a fresh citrus aroma, delicate sweetness and a long hop finish.

CAMRA Champion Beer of Britain East Midlands.  
ALSO IN: Bottle (8x500ml)



# SESSION

## 30L & 50L KEGS

4% ABV • VEGAN • GLUTEN FREE

Juicy session IPA with upfront aromas of grapefruit, citrus and tropical fruit. Moreish with a soft bitterness.



## DDH PALE: CITRA

5.0% ABV • VEGAN

Juicy and soft pale with masses of Citra dry hop. Intense, zesty aroma with grapefruit and tropical fruit flavours in abundance.

AVAILABLE IN: 30L • 50L • 440ML Can

# CANS



## SESSION

4.0% ABV • 12 x 440ml • VEGAN • GF

Juicy session IPA with upfront aromas of grapefruit, citrus and tropical fruit. moreish with a soft bitterness.

ALSO IN: Keg



## DDH PALE: Citra

5.0% ABV • 12 x 440ml • VEGAN

A strong but quaffable beer packed with fresh and juicy Citra goodness, full smooth oaty mouthfeel, and finished by a classic, present bitterness that leaves you wanting to go back for more.

ALSO IN: Keg

# BOTTLES



## SCREECH OWL

5.5% ABV • 8 x 500ml

Balanced IPA with a fresh citrus aroma, delicate sweetness and a long hop finish.

ALSO IN: Cask



## ELSIE MO

5.0% ABV • 8 x 500ml

Single malt golden ale brewed with Low Colour Maris Otter malt. Delicate citrus and floral notes.

ALSO IN: Cask



## HARVEST PALE

4.3% ABV • 8 x 500ml

Refreshing multi-award-winning blonde beer with delicate citrus character.

ALSO IN: Cask



# BEER GIN

During the CV-19 lockdowns, like many others we found ourselves with surplus beer in the cold store. As part of our continuing drive to reduce waste, we decided on a little experiment... We started working with a distillery to turn our surplus beer into gin! Our available gins this week include some classic flavour profiles and others offering something a little different. Enjoy!



## BEER GIN #009

70CL • 40%

Nearly 10 gins later, here we are with a strawberry delight. A summertime staple with subtle sweet strawberry and citrus notes, balanced with peppery juniper.



## BEER GIN #007

70CL • 42% ABV

We're dreaming of summer with this one. Fruity, summer berries give a wonderful balance to the floral earthy base of juniper, liquorice, angelica and coriander.



## BEER GIN #008

70CL • 40% ABV

A zesty mix of orange peel, grapefruit and lime for a fresh and fragrant gin. A medley of citrus fruits and a touch of fiery sichuan pepper make this gin a wonderful match for a classic tonic.



## BEER GIN #006

70CL • 44% ABV

A classic-style gin with a fresh, zesty finish. With a floral botanical base, this gin has all the hallmarks of a classic. We've built on the recipe with the addition of citrus peel and hibiscus, giving a lively fragrant finish.