

# CASTLE ROCK

@CRBrewery • T. 0115 7844 355 • carl.duke@castlerockbrewery.co.uk  
Queensbridge Road, Nottingham, NG2 1NB

## SEASONALS AND SPECIALS - CASK



### TACKLE THIS!

4.0% ABV • GOLDEN ALE

In support of The Oddballs Foundation, we're brewing something new for the Six Nations! 10p from the sale of every pint will be donated to the Foundation - helping them to raise awareness of testicular cancer. This super-supple golden ale is brewed with all UK ingredients. It has a delicate malty sweetness, with balanced hop bitterness and subtle notes of citrus and tropical fruit.



### TILT

4.2% ABV • SIPA • CITRA • AZACCA

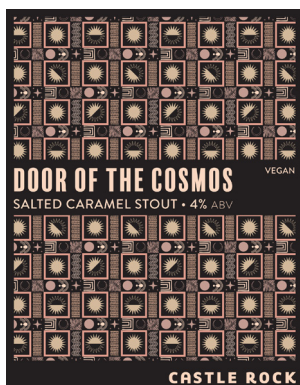
Soft, juicy and hazy session pale with layers of Citra and Azacca hops. Aromas of fresh orange, zesty lime and ripe mango are underpinned by pillowy sweetness and a subtly bitter aftertaste.



### HOW HIGH THE MOON

4.3% ABV • DHP • MOTUEKA • CITRA

Bright and zesty pale ale brewed with Vienna malt and hopped with Motueka and Citra hops. Pouring crystal clear with aromas of fresh citrus peel, resinous pine and ripe mango.



### DOOR OF THE COSMOS

4.0% ABV • SALTED CARAMEL STOUT

A smooth and silky stout, brewed with oats in the grist for added sweetness. Additions of salt and caramel complement notes of chocolate and roast coffee to make for a decadent brew.





## GOLD SOUNDZ

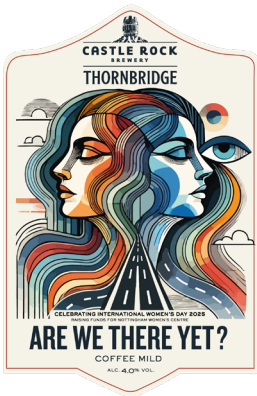
COMING SOON !

4.4% ABV • DHP • GALAXY • SOLERO

Galaxy and Solero hops offer a complex blend of passionfruit, zesty citrus, and succulent stone fruit aromas.

The rich sweetness of juicy mango on the palate culminates in a wonderfully balanced and refreshing dry hop pale.

## CASTLE ROCK x THORNBRIDGE COLLAB - PRE-ORDER!



## ARE WE THERE YET?

CASTLE ROCK x THORNBRIDGE COLLAB

4.0% ABV • COFFEE MILD

We're brewing a tasty coffee mild with Thornbridge Brewery for International Women's Day! Launching at an exclusive event at the Canalhouse on 6th of March. More to be announced!

**10p from every pint sold is donated to  
Nottingham Women's Centre**

BREWED TO CELEBRATE INTERNATIONAL WOMEN'S DAY.

RAISING MONEY FOR NOTTINGHAM WOMEN'S CENTRE.

## OUR HOUSE 3.4% ABV • EXTRA PALE ALE

A lower-alcohol and sessionable quality alternative in our roster,  
Our House is an easy-drinking extra pale ale with a satisfying crisp finish.



**HARVEST PALE**  
3.8 % ABV

Refreshing multi-award-winning blonde beer with delicate citrus character.

ALSO IN: Bottle (8x500ml)



**BLACK GOLD**  
3.8 % ABV

Full-bodied mild with a hoppy aroma and well-balanced bittersweet taste.  
GOLD CAMRA Champion Beer East Mids Region.



**PRESERVATION**  
4.4 % ABV

Brewed to the traditional East Midlands style, Preservation is a russet-coloured, easy drinking full flavoured best bitter.  
SILVER SIBA Midlands 2024 Cask British Bitter Category.



**OUR HOUSE**  
3.4 %

A lower-alcohol and sessionable quality alternative. Our House is an easy-drinking extra pale ale with a satisfying crisp finish.



**ELSIE MO**  
4.7 % ABV

Single malt golden ale brewed with Low Colour Maris Otter malt. Delicate citrus and floral notes.  
BRONZE SIBA Midlands 2024 Cask Pale Ale Category.  
ALSO IN: Bottle (8x500ml)



**SCREECH OWL**  
5.5 % ABV

Balanced IPA with a fresh citrus aroma, delicate sweetness and a long hop finish.  
CAMRA Champion Beer of Britain East Midlands.  
ALSO IN: Bottle (8x500ml)





# SESSION

## 30L & 50L KEGS

4% ABV • VEGAN • GLUTEN FREE

Juicy session IPA with upfront aromas of grapefruit, citrus and tropical fruit. Moreish with a soft bitterness.



### DDH PALE: CITRA

5.0% ABV • VEGAN

Juicy and soft pale with masses of Citra dry hop. Intense, zesty aroma with grapefruit and tropical fruit flavours in abundance.

AVAILABLE IN: 30L • 50L • 440ML Can

OVERALL CHAMPION GOLD WINNER  
SIBA Midlands Awards 2024 - Regional Keg

## CANS



### SESSION

4.0% ABV • 12 x 440ml • VEGAN • GF

Juicy session IPA with upfront aromas of grapefruit, citrus and tropical fruit. moreish with a soft bitterness.

ALSO IN: Keg



### DDH PALE: Citra

5.0% ABV • 12 x 440ml • VEGAN

A strong but quaffable beer packed with fresh and juicy Citra goodness, full smooth oaty mouthfeel, and finished by a classic, present bitterness that leaves you wanting to go back for more.

ALSO IN: Keg

# BOTTLES



**SCREECH OWL**  
5.5% ABV • 8 x 500ml

Balanced IPA with a fresh citrus aroma, delicate sweetness and a long hop finish.

ALSO IN: Cask



**ELSIE MO**  
5.0% ABV • 8 x 500ml

Single malt golden ale brewed with Low Colour Maris Otter malt. Delicate citrus and floral notes.

ALSO IN: Cask



**HARVEST PALE**  
4.3% ABV • 8 x 500ml

Refreshing multi-award-winning blonde beer with delicate citrus character.

ALSO IN: Cask

## BEER GIN

During the CV-19 lockdowns, like many others we found ourselves with surplus beer in the cold store. As part of our continuing drive to reduce waste, we decided on a little experiment...

We started working with a distillery to turn our surplus beer into gin! Our available gins this week are:

#008: A zesty, fragrant, citrus gin with a hint of sichuan pepper spiciness.

#007: Containing summer berries and notes of liquorice and coriander.



**BEER GIN #008**

70CL • 40% ABV

A zesty mix of orange peel, grapefruit and lime for a fresh and fragrant gin. A medley of citrus fruits and a touch of fiery sichuan pepper make this gin a wonderful match for a classic tonic.



**BEER GIN #007**

70CL • 42% ABV

We're dreaming of summer with this one. Fruity, summer berries give a wonderful balance to the floral earthy base of juniper, liquorice, angelica and coriander.